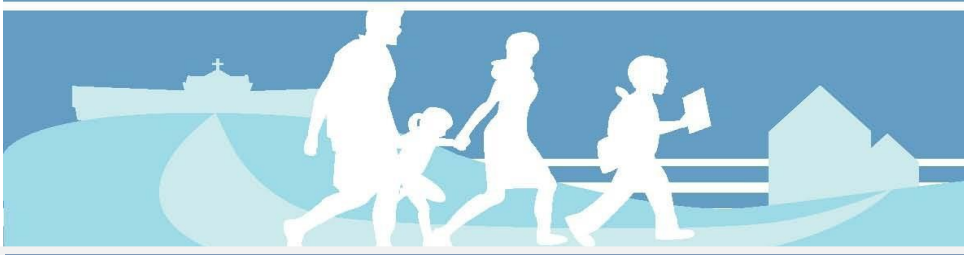


# Tuesday Note

November 22, 2016



“Blessed be the God and Father of our Lord Jesus Christ, who according to His abundant mercy has begotten us again to a living hope through the resurrection of Jesus Christ from the dead, to an inheritance incorruptible and undefiled and that does not fade away, reserved in heaven for you, who are kept by the power of God through faith for salvation ready to be revealed in the last time.” 1 Peter 1:3-5

## CHRISTMAS SERVICE PROJECT THE GIVING TREE

During this Christmas season, we wish to reach out in love to members of our community with gifts for children in need. Our Giving Tree is now set up in the lobby of the school **and will be until afternoon dismissal, on Friday, Nov. 25<sup>th</sup>**. It will be covered with ornaments bearing the first names and ages of children in our community, along with a modest gift request. If you are interested in participating in this project, please take an ornament from the tree and purchase a gift for that child. We ask that you **bring the unwrapped gift (along with the ornament) between Nov. 28<sup>th</sup> and Dec. 1<sup>st</sup>**. (*The CAS will pick up the gifts at that time. Gifts not received by Dec. 1<sup>st</sup>, should be delivered to 7155 Enterprise Way, located off Lauzon Parkway in the former “The Brick” building.*) So that we can maintain a good record of the names distributed, we ask that only adults take ornaments from the tree. Thank you for your support of our service projects.



*“O Lord how shall I meet Thee, How welcome Thee aright?  
Thy people long to greet Thee, My Hope, my heart’s Delight!  
Oh, kindle, Lord, most holy, Thy lamp within my breast  
To do in spirit lowly all that may please Thee best.”*

## UPCOMING EVENTS

### Tuesday, November 22

- Giving Tree Ornaments Available (until Friday)
- Lego Robotics 3:30 – 5:00 p.m.
- Chess Club 3:30 – 4:30 p.m.

### Wednesday, November 23

- Chapel Service 8:30 a.m.
- Girls` Volleyball Practice 3:30 – 4:45 p.m.

### Sunday, November 27

- First Sunday in Advent

### Monday, November 28

- Boys` Volleyball Practice 3:30 – 4:45 p.m.
- Giving Tree Gifts Due (until Dec. 1)

## CHESS CLUB



Chess Club will take place after school today, from 3:30 - 4:30 p.m. Any interested students, **from Grades 2 to 4**, who would like to participate in chess are welcome. Any students in **Grades 5 to 8**, who are not in Lego Robotics, who wish to play chess are welcome to attend and get in some practice matches. The **full Chess Club** will begin meeting on **Tuesday, Dec. 6<sup>th</sup>**. The chess club meets most Tuesday afternoons until the end of February. If you have any questions about Chess Club, please speak to sponsor teacher, Ms. Raiger.

## LEGO ROBOTICS

Lego Robotics will be held today after school from 3:30 – 4:30 p.m.



## VOLLEYBALL PRACTICE SCHEDULE



Boys' Volleyball Team: Mondays after school,  
from 3:30 – 4:45 p.m.

Girls' Volleyball Team: Wednesdays after school,  
from 3:30 – 4:45 p.m.

There will be additional practices for both teams held during school hours. **The Volleyball Tournament will be held on Friday, December 2<sup>nd</sup>, at Academie Ste. Cecile.**

### OUR SCHOOL WEBSITE

Have you visited the school website lately? In addition to all of the regular website features, you can use it to access helpful items like the school Lunch Menus. You will also find links to the current Tuesday Note and all of the past Tuesday Notes, as well as things like the monthly Devotional Calendar. Be sure to visit [www.flca.ca](http://www.flca.ca) and remember to like us on Facebook as well.

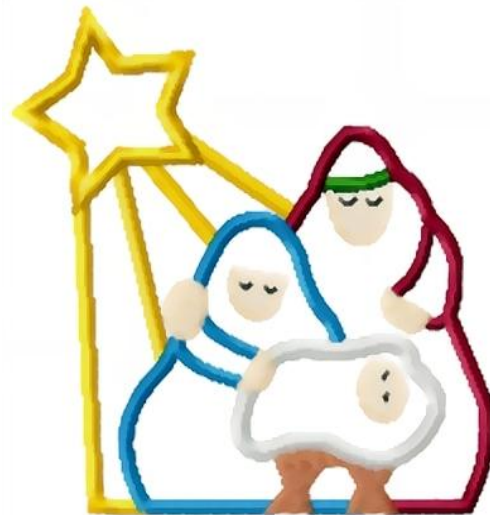


### MARK YOUR CALENDARS

Dec. 2	Volleyball Tournament at ASC
Dec. 6	Chess Club begins (all members)
Dec. 13	Christmas Pageant 1:00 & 7:00 p.m.
Dec. 23	Last day of school before Holidays Christmas Recital 1:00 p.m. Early Dismissal 2:00 p.m.
Jan. 9	School Resumes

You're invited to FLCA's  
22nd Annual  
Christmas Pageant

"Star  
of  
Wonder"



Tuesday, December 13, 2016  
1:00 p.m. & 7:00 p.m.

First Lutheran Christian Academy  
3850 Locke Street, Windsor, Ontario N9G 1S1  
Phone – (519) 250-7888  
Fax – (519) 250-7715  
E-mail address: [flca@mnsi.net](mailto:flca@mnsi.net)

## ADVENT APPEAL ... We Need Your Help

This week in the mail, you will receive a copy of our Advent Appeal for 2016. For the past twenty-two years, God's love has provided First Lutheran Christian Academy with a Christ-centred learning environment where parents, children, and teachers together foster academic excellence, integrity and compassion in students as they "grow in the nurture and admonition of the Lord". **Here, that precious message of the love of God in His Son, Jesus, is freely shared as we prepare our students for their calling in life and for eternity.**

**Each year during the Advent season**, we ask you to share in this work with us. Over the past years, we have been the grateful recipients of much needed help through your generous donations to our Advent Appeals.

The dollars raised through our major fundraisers are directed right into the operating expenses of the Academy. These expenses include things like salaries, cleaning supplies and utility bills. **Eighty percent of the operating budget comes from tuition fees and twenty percent through your fundraising efforts.** Over our twenty-two year history, we have come to realize that this is the most equitable division for our families. It allows us to keep tuition at an affordable level while providing those whom God has blessed with plenty with an opportunity to share. (Families with multiple children pay discounted fees for their second and any additional children, making donation and fundraising efforts even more important.) Some say that "we should just pay higher tuition" but for many this would be unattainable and would inevitably result in decreased enrolment, which we never want to see.

***Won't you please consider helping us again during this Advent Season in order that we might continue to share the Gospel with our students and their families.***  
**Your response to our Advent Appeal is especially needed this year as we strive to meet the fundraising portion of our 2016 budget which is \$81,000.**

**Use** the pledge card which you received in the mail to indicate how you would like to provide a sustaining gift for First Lutheran Christian Academy. You may return it to us via regular post, or stop by the Academy office.

Our hope is that you will be encouraged by the difference that Christian education is making in the lives of our children and that you will support their future with your financial gifts... your time... your prayers. Join us as we build upon God's foundation and prepare our children for life and for eternity.

