

# Monday Note

December 12, 2016

"O blest the land, the city blest, where Christ the Ruler is confessed!  
O happy hearts and happy homes to whom this King in triumph comes."

## TOMORROW IS PAGEANT DAY!

**Our staff and students have been working so hard, and our pageant is READY. We can't wait to share it with all of you!**

**Since so many of our reminders have to do with Pageant Day, which is tomorrow, we're sending you a MONDAY NOTE this week, packed with details!**



## ADVENT APPEAL

Our annual Advent Appeal is underway, and we are already beginning to see some much needed funds from friends of our Academy who understand how vital it is that we receive donations in order to continue to do the work we do here. **As of today, our Advent Appeal total has reached \$15,779.00, leaving us just \$10,000 to go to meet our Donation/Fundraising goal for the year.** Praise God! At this Christmas season, won't you consider a donation to the First Lutheran Christian Academy Advent Appeal? We thank you in advance for your generosity!

## MEMORIAL DONATIONS

Many of our families have made gifts in honour of the late Mr. Frank Johnson, our founding principal. We know that nothing would please him more than that people support the school he so loved. Thank you.

## CHESS CLUB

There will be no Chess Club tomorrow, due to the Christmas Pageant. Chess resumes next Tuesday, Dec. 20<sup>th</sup>, from 3:30 – 4:30 p.m.

## HOT LUNCH



There will be no hot lunch tomorrow as the gym will be set up for the pageant. Students should bring a lunch and a drink from home tomorrow.



## UPCOMING EVENTS

### Tuesday, December 13

- Christmas Pageant 1:00 & 7:00 p.m.
- NO Hot Lunch today
- NO Chess Club today

### Wednesday, December 14

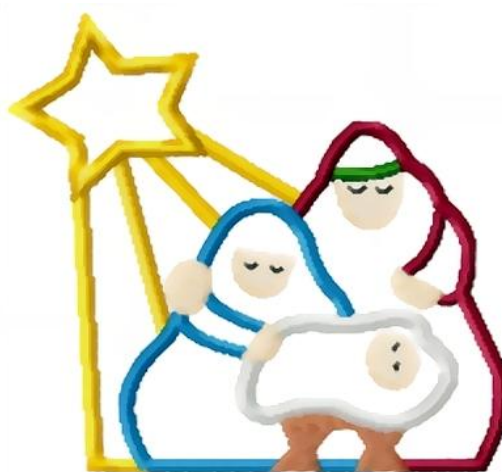
- NO Chapel Service

## FÜNDSCRIP ORDERS

The final order for the school year will be placed on Monday, December 19<sup>th</sup>, and be ready for pick-up on Friday, December 23<sup>rd</sup>, at dismissal time. There will be no orders during the Christmas holidays.



You're invited to FLCA's  
22nd Annual  
Christmas Pageant  
"Star of Wonder"



Tuesday, December 13, 2016  
1:00 p.m. & 7:00 p.m.

## MARK YOUR CALENDARS

Dec. 23	Last day of school before Holidays Christmas Recital 1:00 p.m. Early Dismissal 2:00 p.m. NO After School Care
Jan. 9	School Resumes



© come • © come • Emmanuel

## CHRISTMAS PAGEANT DETAILS.....

Please come and celebrate with us as we worship the Christ Child in song and scripture. **Our 22<sup>nd</sup> annual Christmas Pageant, "Star of Wonder" will be held on Tuesday, December 13<sup>th</sup>, with performances at 1:00 p.m. and 7:00 p.m.** In addition to our pageant, which involves all the children from Grades 1 to 8, the PK/JK/SK class has prepared a few selections and our Grade 6 and our Grade 7/8 bands will play. Our strong hope is that all students will be present in both performances – we need them.

**Dress for the afternoon performance** for those children in Grade 1 to Grade 8, consists of their **"best" school uniform**. We'll work with the children that day to help them remain clean and fresh looking throughout their recesses.

**Parking and seating for our evening performance** always present a special challenge ... our cast seems to be very popular! We will attempt to provide as much seating as possible; please allow enough time to "park and walk", so that you can enjoy the opening selections. Please do not leave valuables in your car; we don't want to encourage "break-ins". There are usually extra seats at our afternoon performance ... perhaps that time fits your schedule.

**There will be no hot lunch on that day.** Since the Gym (where we usually eat lunch) will be set for the performance, we will eat lunch in our classrooms on Tuesday. **The kitchen will be closed, so every child needs to bring a bagged lunch to eat and a drink** thus minimizing cleanup in the classrooms following lunch.

**We ask that the children come to the evening performance dressed in their "Christmas Best". (no jeans, please.)** Pupils should arrive at the school for the evening performance at **6:30 sharp** and proceed to their classrooms, so that we can begin the performance right on time. Please help us to ensure that the children are appropriately dressed. If you come earlier, would you please keep your children with you until 6:15 p.m., when their teachers will be able to supervise them in their classrooms.